

Emmanuel Lutheran Church



ECHOES

A Member of the Evangelical Lutheran Church in America

Volume 48, Issue 1

1315 North Stevens, Tacoma, WA 98406

January 2009



From the Pastor's Desk

ABOVE ANYTHING ELSE

During my early teen years, when I began Confirmation instruction, I was introduced to Luther's *Small Catechism*. With that introduction our class was informed that before we could be confirmed we would have to memorize the five chief parts of the catechism (with their meanings, of course). So I began that long and laborious task, with the starting point being the First Commandment and its meaning: *You shall have no other gods before me!* (What does this mean?) ***We are to fear, love and trust in God, above anything else.***

Recently that commandment especially came back to my mind as I reflected on happenings in our society and world. It is as though over a long period of time we have slipped into placing our "fear, love and trust" in the wrong gods. The activities of terrorists have caused us to be fearful and that fear can have a controlling influence on our lives. We are all guilty of loving "things", clutching to ourselves a wide variety of material possessions. We trusted that our financial futures were secure, only to have Wall Street start a crisis which has had a domino effect which has impacted every one of us.

When security is shattered, and the tranquil life is suddenly filled with doubt and turmoil, it at least forces us to once again evaluate priorities and raise important questions regarding what our lives are really all about. As the Old Testament prophets repeatedly suggested, it is the worst of times that can cause our lives to be turned to a new and true direction.

The uncertainty in which we find ourselves, ought to cause us to ask some hard questions regarding what we fear, love and trust, **above anything else.** Our present circumstances cry out for us to establish right priorities that are not going to bring us more disappointment, and new decisions that underline lasting values rather than wrong choices that undermine the very essence of our lives.

From the Pastor's Desk	1
China Service Ventures	3
We Need Teachers in China	4
Church Council Minutes	5
Reminder/Did we print wrong info?	8
Office Contact Information/Website	9
Change of Address/Echoes Deadline/FYI	10
Men's Breakfast	
Adult Forum//Call Committee/ Confirmation	11
Adult Instruction/Lay School	12
Thank you to	13
Sympathy/In the Hospital/ Congratulations	14
Parish Records	15
In the Mailbag	16
Faith Circle/Martha Circle/Altar Guild/ Knit Wits	17
Soup Group/Holiday/Blood Drive Office Volunteers	18
Lutheran World Relief	19
Emmanuel Lutheran Childcare	20
Worship Assistants	21
Monthly Calendar	—
Puzzle	—

There are three questions which I believe each of us needs to struggle with as we enter into 2009, for the answers will determine the direction of our journey throughout this new year and indeed our eternal trek. Those three questions are:

- 1) **What do I fear above anything else?** (What we fear is that which controls us.)
- 2) **Above anything else what or who do I love?** (Jesus said: “Your heart will always be where your riches are”.)
- 3) **What is it that I trust above anything else?** (Do I trust the dollar, or the God whose name is printed on it?)

Early this year we will conduct our annual mission support program in which we will specifically ask members to pledge their financial support for the mission and ministry of Emmanuel. Our theme for this mission support program is **ABOVE ANYTHING ELSE**. That is a very appropriate theme for our response to God’s grace which has been lavished upon our lives.

May each member of Emmanuel ponder carefully the answers to the above three questions, and if God is indeed the answer, then respond joyfully from generous hearts.

Pastor Dick Foege



100 Words from China Service Ventures

2009 Service Opportunities in China: What will you do in the New Year?

Where has the year gone? What did I do this past year? I ask myself these questions every year around this time. With 2009 is just around the corner, have you planned how you might like to serve in God's world mission? Well, China Service Ventures, a Lutheran 501 (c) (3) charitable organization has some ideas for you to consider.

CSV needs volunteer English teachers to serve in rural Xinyang, Henan Province. The goals of this program are to provide intensive oral English language training for rural Chinese English teachers, to raise the level of English taught in the rural countryside, and to build relationships with the people of China. The cost is \$1,200 excluding airfare and visa. July 5-August 3.

CSV's Youth Servant Project needs youth from Lutheran churches to serve the poor in rural China. The Youth Servant Project brings together American and Chinese youth to serve those less fortunate in the rural areas. Past projects have included painting a rural school, cleaning nursing homes, and repairing a road. The cost is \$1,140 excluding airfare and visa. July 15-30.

Make 2009 the year that you and members of your congregation participate in God's global mission in China. Next year when you say to yourself, "Where has the year gone?" or "What did I do?", you will be able to reminisce about your service experience in China. For more information contact Kelly O'Brien, CSV Office Manager at chinaserviceventures@hotmail.com or 651.659.1396. Come with us to China and serve God's people.

Grace and Peace,

Steven F. Ray, Developer

CSV Relations

1.877.408.7056

steverayCSV@aol.com

www.newsoundsinchina.org

CSV is a non-profit 501 (c) 3 Charitable Organization

and an affirmed partner with the ELCA

"God's Work, Our Hands"



中美服务促进会
China Service Ventures

WE NEED TEACHERS

2009 Summer English Language Training Program

July 5-August 3

Where?

Henan Province, China

Who is Eligible?

Trained Teachers & Volunteers

(mature post-high school students are also invited)

Who Will You Teach?

Chinese English Teachers, Nurses, and Students

Costs?

Approximately \$900.00

Post-Teaching Excursion?

Xi'an & Yangtze River (add 7 days)

Costs: approximately \$700.00

For more information & an application

Please contact:

Steven Ray, Director of CSV Relationships

1.877.408.7056 or 253.851.7643

steverayCSV@aol.com

All costs, except for sightseeing, are tax deductible

CHURCH COUNCIL HIGHLIGHTS

President.....	Angela McDougall	Council Member (2)	Roger Ahrens
Vice President.....	Dr. Dan Cook	Council Member (3)	Russ Holtz
Finance.....	Mike Brown	Council Member (4)	Maylin Clark
Secretary.....	Nancy Savage	Council Member (5)	Joan Kaplin
Council Member At Large (1).....	Dennis Dale		



EMMANUEL LUTHERAN CHURCH

COUNCIL MINUTES

November 25, 2008

6:04 PM – 8:30 PM

COUNCIL ATTENDEES: Bob Mattson, President; Jim Ellingson, Education Liaison;

Angela McDougall, Vice President; Laurie Moren, Outreach Liaison; Nancy Savage, Secretary; Roger Ahrens, Resource Committee Liaison; Maylin Clark, Fellowship; Pastor Foege; Diane Wasalino, Past Council President

COUNCIL ABSENT:

Russ Holtz, Worship & Music; Dave Andersen, Finance

Devotions: Angela McDougall

Prayer: Angela McDougall

Guests: Incoming Council members, Joan Kaplan and Dan Cook; Call Committee Chairs, Jim Moren and Paula Aplin

1 **Bob** called on **Jim Moren** to give an update on the Call Committee's Congregation Profile sent to the Synod Office November 24th, 2008. **Jim** and **Paula** went through the various items on the Profile. The next step is to review any names offered by the Synod when they are received.

2 Minutes for the October 28 Council minutes and November 9 Congregational Meeting minutes were reviewed for approval. Amendments were offered to identify the name of the policy reviewed, Child Protection and addition of the last name missing in the Annual meeting. . **Angela** moved for approval with the amendments, second by **Jim**. Minutes **approved**.

3 **Angela** reported that additions to the Daycare Board are Kelly King and Lynda French. Nordis Baker is a potential addition. Jody Gui is the parent rep. They put \$15,000 into a CD; they are looking at increasing the tuition in January and will be giving a COLA for the staff.

4 **Jim** reported that the Sunday School is having the Christmas Program after service on December 14th. They are working with Fellowship to have sandwiches to serve due to the time of the program.

- 5 **Roger** reported on the status of the roof leaks around the Bell Tower. They are in hopes the leak cause has been found – the flashing was too short. The new roofer, Ron Johnson, will stick with the process until we are sure the leaking is stopped.
- 6 **Nancy** reported that Friday November 28th, 9:00 am there will be a 'closet cleaning' work party to clear the closets of unused items from the Church. All are welcome.
- 7 **Nancy** reported on the status of converting the cassette tapes into a digital format.
- 8 **Laurie** reported that the youth had a good turnout for putting together the Thanksgiving Baskets for the Elders to deliver.
- 9 **Maylin** reported that the dinner on November 9th was successful, approximately 130 in attendance. December 13th there will be a new member dinner. The Soup Group could still use more volunteers to assist.
- 10 **Pastor** reported for Worship and Music in Russ's absence – they are looking at ways to market the 8 o'clock service better and they are starting to look at new music staff and how to go about advertising.
- 11 **Nancy** reported for Future Steering Committee – Nancy Holtz, Carlene Garner and Nancy Savage are working on the 'red-line' copies of the job descriptions for the Admin Secretary and the Program Coordinator. We will be meeting with Pastor for his review prior to presentation to Council. Out of the interview process, we found two items: 1) the payroll submission is not being reviewed by other than the preparer, the Administrative Secretary. 2) the employee benefit accrual process is not being done according to the Administrative Policies. **Diane** indicated that she had some background information at home. **Bob** requested that Nancy and Diane review that and the Council would address the issue next month.
- 12 Discussion regarding an audit review path for payroll submission. **Angela** moved that *the Pastor and the Finance Chair review the January-2009 initial payroll submission for compliance with the rates as approved by the Budget process*; seconded by **Jim**. **Approved**
- 13 **Pastor** reported regarding Finance in Dave's absence. A slight improvement during the past month was made; we need to do better. The Finance Committee is reviewing the line items in the Revolving Fund and will bring a proposal to the Council in December
- 14 **Pastor's** report, we received 7 new members Sunday November 23rd. New members will be received on Saturday, December 13th – that's the good news. The bad news, the membership rolls have not been reviewed in relationship to the church's policy to maintain active status since 2003. The Constitutional measurables are attendance, giving or communing. If there is no activity in a two-year period, they are moved to an inactive status. The financial review is done by the Finance Secretary, communion/attendance from the communion cards. The baptized membership is being revised to 977 as of November 24, 2008.
- 15 **Pastor** indicated that he has had a number of questions regarding his prayer of Sunday November 23rd – that the ELCA come to its senses. The background is the national church council met and rejected the ELCA's legal committee's advices that any resolution brought before the August Synod Assembly regarding gays and/or lesbians be required to pass by a two-thirds vote. The National Church Council voted that all resolutions regarding this subject only have to pass by a bare majority. They recognized that an estimated 2-million members would leave the ELCA if the ordination of gays and lesbians passes – they do not care.
- 16 **Bob** brought forth the Youth Director Search Committee's recommendation for Jeff Olson, (who is ill). The Recommendation is to hire **Laurie Moren**. The Council moved to Executive Session and dismissed the guests and Laurie Moren to review the recommendation.
- 17 **Angela** moved to accept the recommendation at the salary of \$32500 effective January 1, 2009; seconded by **Jim**. **Approved**.
- 18 Commencing with the Council meeting – **Bob** indicated to Laurie the Council's affirmative vote and the salary and effective date. **Laurie** accepted the position.

19 **Bob** presented the issues regarding the 403b/IRS additional requirements. Discussion followed, that the Church is not the holder of the 403b policy – the offered \$600 match in the budget was never intended to be a Section 125 program and the IRS. Following discussion, **Bob** will call Thrivent and find out what other options are available that do not require employer 'ownership' and filings. Tabled until next meeting.

20 **Bob** put down a question as new business – 'How do we get from here to there?' Discussion followed.

Adjourned with the Lord's Prayer.

Next meeting: December 22nd, 2008 – 6:00 pm

COUNCIL HIGHLIGHTS

December 29, 2008

This meeting was rescheduled from December 22 due to weather conditions.

The Council discussed that it will no longer post the full content of the monthly Council Minutes in the Echoes. Instead they will be posted in the Narthex. The Echoes will reflect the Council Highlights. Council "Town Hall Meetings" at Adult Forum will continue every 3-4 months.

The Finance Committee reported that November ended with reducing the '08 deficit to

-\$564 from October of -\$8,775. A discussion followed relating to accounting policies and fund uses. It was concluded that we need to seriously study having an audit conducted by an outside source. It is recommended that this audit cover a three year period. Additionally, there was an incorrect posting of fund transfers from the Memorial Fund, which needs to be repaid from the General Fund.

The Education Committee needs a few new members, contact Nancy Holtz.

It was acknowledged that the Christmas Program was done very well and was well attended. The Lay School of Theology in January is scheduled (evening classes only) addressing the subject of Icons, Art & Architecture by Dr. Caroline T. Swope.

Adult Ed Comm. needs a few new members, contact Dale Wirsing.

Resource Comm. reported that the "classic" roof leak from the bell tower and the back of the sanctuary remained dry during the snow storm, however, a new leak has appeared in the Sand Memorial Center and possibly the kitchen. The roofers will be asked to address these issues. There was discussion about upgrading the technology for recording sermons to CD from cassette tape.

Outreach Comm./ Youth Comm. The Youth sold donuts on Dec 7th and used the proceeds to help an "adopted" family in the community have a good Christmas.

Fellowship Comm. has recently had 2 new member "lunches" and was also involved with the Christmas Program of Dec 14th.

Worship & Music Comm. is planning ahead and is discussing beginning the search for a new Music Director. They also need a few new members.

Future Steering Comm. is having its annual Committee Convention on Feb. 28. The theme will be "We are working in the Master's Field". Pastor Daniel Shaw will be the Featured Speaker. All committee members are urged to attend. The Committee is continuing to work on reviewing job descriptions and Admin Policies.

Council also discussed renaming the Administrative Pastor position to just "Pastor".

The 2009 Officer and Committees Report was presented and approved.

The meeting closed with big "Thank You" to all of those who served on the Council during 2008, the reading of John 14:27 and the Lord's Prayer.

Respectfully submitted,

Bob Mattson

Reminder!

Attention: All committee chairpersons and those charged with the primary responsibility for congregational programs and organizations, are reminded that **annual reports are due in the church office no later than Friday, January 9th at 5:00 P.M.**

If at all possible we are asking that you e-mail your reports or download them on a floppy disk and drop them off in the church office by the due date. Thank you!

NOTE:

You can email your reports to either of the following addresses:

judy_emmanuel22@hotmail.com

Office@emmanuel-tacoma.org

DID WE PRINT WRONG INFORMATION???

In the December Echoes, we printed an interesting story regarding the origins of the song, *The Twelve Days of Christmas*, which alleged that it came from the time several centuries ago when Roman Catholicism was banned in England.

After we published the story, we were informed that there was no truth to it, but without any verification that it was not true. Is it true? If you have differing information about its origin, we would very much like to hear from you, and will be happy to publish your findings.

To be honest, I've never been that fond of *The Twelve Days of Christmas*, but have always felt we were fortunate that there weren't fifty days of Christmas as there are of Easter. Can you imagine what the content of *The Fifty Days of Christmas* would be?

Pastor Foege



WE HAVE A WEBSITE!
CHECK US OUT AT:
www.emmanuel-tacoma.org

ECHOES newsletter is now available on the website!

Contact Information

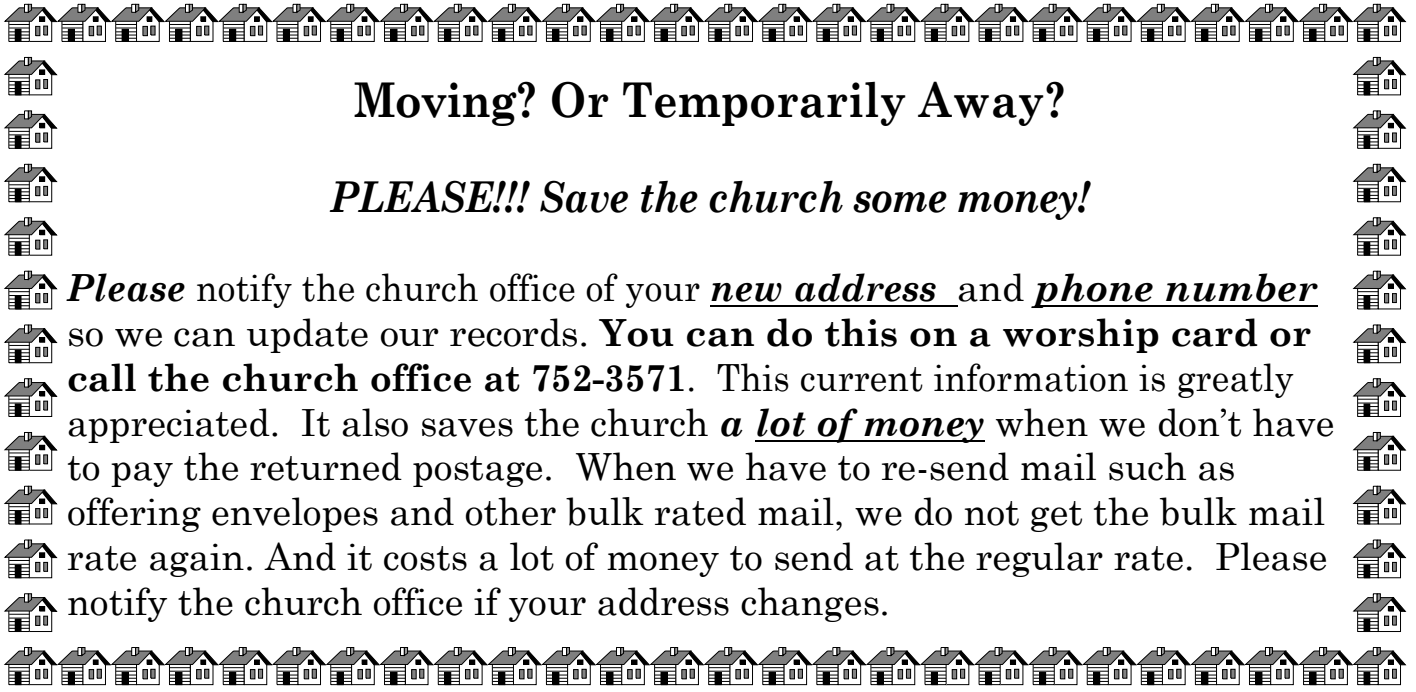
Church Office.....752-3571
 Emergency Phone Number253-318-5006
 Rev. Richard Foege, Pastor.....Ext. 12
 Mary Mobley, Administrative Secretary/Bookkeeper/Wedding Coordinator.. Ext. 11
 Mary Foege, Director of Music.....Ext. 14
 Judy Bebich, Program Coordinator/Secretary.....Ext. 15
 Wendy Hrvatin, Childcare Director.....752-1195
 Office Fax Number..... 752-6078

E-mail Addresses

Richard Foege, Pastor.....rhfoege@emmanuel-tacoma.org
 Steven Ray, Outreach Pastor.....steveraycsv@aol.com
 Administrative Secretary.....office@emmanuel-tacoma.org
 Program Coordinator.....progco@emmanuel-tacoma.org
 Sunday School..... sundayschool@emmanuel-tacoma.org
 Youth Director.....youthgroup@emmanuel-tacoma.org
 Emmanuel Lutheran Childcare Center.....emmanuelutheranccc@yahoo.com

Web Sites

Emmanuel's Web Site.....www.emmanuel-tacoma.org
 Southwest WA Synod Web Site.....http://www.lutheranssw.org



Moving? Or Temporarily Away?

PLEASE!!! Save the church some money!

Please notify the church office of your *new address* and *phone number* so we can update our records. **You can do this on a worship card or call the church office at 752-3571.** This current information is greatly appreciated. It also saves the church ***a lot of money*** when we don't have to pay the returned postage. When we have to re-send mail such as offering envelopes and other bulk rated mail, we do not get the bulk mail rate again. And it costs a lot of money to send at the regular rate. Please notify the church office if your address changes.

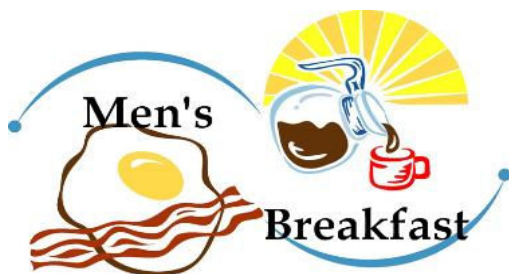
ATTENTION!!! DEADLINE: FEBRUARY 2009 ECHOES JANUARY 19TH

Please note that all February 2009 ECHOES articles are due in the church office on ***Monday, January 19th.*** If your article is not received by that time, it will ***not*** be published in the upcoming issue. In order for members to receive the ECHOES by the first of each month, you must have all of your information by the due date. You may e-mail your articles and information to Judy in the church office at either of the following addresses.

Judy_emmanuel22@hotmail.com

Progco@emmanuel-tacoma.org

FYI....If you want to know the availability of a room or have an event scheduled on the calendar, or have some information to put in the ECHOES newsletter or the weekly bulletins, please call or e-mail ***Judy Bebich*** (progco@emmanuel-tacoma.org). If you want information on weddings or have financial questions, please call or e-mail ***Mary Mobley*** (office@emmanuel-tacoma.org). If they are not available please leave a message at the front desk and your call will be returned promptly.



Join us every Monday morning at 9:00 A.M. and enter the week fed with God's word and a hearty breakfast. You won't want to miss this refreshing start to your week.

Everyone is welcome!

ADULT FORUM



**Sunday mornings during the Education Hour
10:00 AM. In Room 200**

- Jan. 4* **Dr. Don Ryan**, on archaeology
Jan. 11 *To be announced*
Jan. 18 *To be announced*
Jan. 25 *To be announced*

ADULT BIBLE STUDY

The Sunday Adult Bible study will continue to be taught by **Pastor Dick Brandt, ret.** on Sunday mornings at 10:00 A.M. during the Education Hour in the Fireside Room.

CALL COMMITTEE UPDATE!

The Church Mission Profile was submitted to the Synod at the end of November. The committee will receive names of potential candidates in mid-January.

ATTENTION: 7TH & 8TH GRADERS!

**NEW MID-WEEK CONFIRMATION CLASSES TO BEGIN
JANUARY 7TH– MARCH 11TH**

5:00 P.M.	APOSTLES CREED	PASTOR DICK FOEGE
6:10 P.M.	CHURCH HISTORY	PASTOR STEVEN RAY

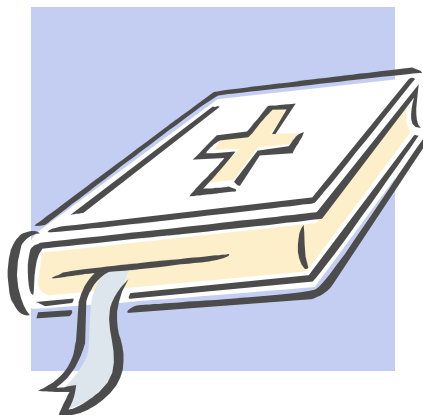
There will be no classes on January 14th. The classes will be extended one week to March 11th. A light supper will be served at 5:50 PM each week. All 7th and 8th graders are invited to attend these classes if they have not been completed previously.

31 EVANGELISTS (or more) STILL NEEDED

Last Fall, I invited at least 40 congregational members to step forward by intentionally inviting a relative, neighbor or friend to attend a *What Lutherans Believe* series of classes, **and** attending the classes with them. Since then, nine members have done that!

We are still looking for at least 31 more to follow their lead. The next series of classes will begin on **SUNDAY, JANUARY 11, at 6:00 pm in Room 200.** This 10-week course will meet every Sunday, 6:00-8:00 pm.

Begin 2009 by doing someone (plus yourself) a big favor. We look forward to seeing **you** in class!



The Lay School of Theology

At Emmanuel Lutheran Church Offers

Seeing Salvation: The Hidden Language of Christian Art and Architecture
by Dr. Caroline Swope

**4 Thursday Evening Classes January 8th, 15th, 22nd & 29th, 2009
7:00 - 9:00 P.M.**

The cost is \$15.00 and pre-registration is not required. If you have any questions,
please call the church office at 752-3571

Come join us and bring a friend!



TO:

DORIS ANDERSON, GLORIAN DELORME, JOYCE FARMER, MARGE GUTHRIE, MARY ELLEN GLOCKNER, ANITA IDE, VERNA JONES, GLORIA LINDSTROM, NORMA LYSLO, GAIL MARKHAM, SHARON MARTIN, JO NICHOLS, MYRNA SPARKS, and JAN WALTIER, for all of their wonderful help in the church office.

COLLEEN DOCKERY and NANCY SAVAGE, for all the work they do taking charge of the *Lay School of Theology* class registration.

VERDA JACOBSON, for all the work she does with all the church mailings.

ALL OF THE VOLUNTEERS, who help with extra projects in the church office.

LINDA FUSON, for all her hard work setting up the volunteer schedule and calling for readers each month.

ALL THE VOLUNTEERS WHO SERVE AS LAY LEADERS, LAY READERS AND WORSHIP ASSISTANTS THROUGHOUT THE YEAR. You are very much appreciated.

LINDA FUSON, LAMAR AND SHEILA HUGHES, JO NICHOLS, CONNIE SCUSSELLE, SANDY SHAW, JOEL STUMPH, JAN WALTIER and anyone else who has brought treats to the church office. They are always appreciated and welcome.

MARNA CLARK and THE COUNTERS, for all their dedicated time and service.

THE CHURCH COUNCIL MEMBERS, ELIZABETH ALTAR GUILD, AND ALL OF THE SPECIAL COMMITTEES. Your continued and dedicated service is very much appreciated.

THE FELLOWSHIP COMMITTEE, especially **GAIL MARKHAM, CAROL OAK** and **MIM RITTER**, who are always there to set-up and clean-up following all of Emmanuel' events. Also to **LINDA FUSON** who does all the food preparation. **Thank you all so very much.**

VOLUNTEER VAN DRIVERS, who make it possible for ones that cannot drive to come to worship services.

EMMANUEL'S CHOIRS and MUSIC STAFF, for all the beautiful music they provide for our worship services throughout the year.

EMMANUEL'S CHURCH COUNCIL, for their dedication and the extra long hours they worked for the best interest of the congregation during the past year. Thank you **Bob Matson, Angela McDougall, Roger Ahrens, Russ Holtz, Jim Ellingson, Laurie Moren, Maylin Clark, Dave Andersen** and **Nancy Savage** for hanging in there when it wasn't an easy task to do.



With Sincere Sympathy

Emmanuel Lutheran congregation extends it's heartfelt Christian sympathy to:

The family of Ellie Coates, who passed away on December 7th.

The family of June Lund, who died on December 15th.

Chuck and Lee Hunt and family, on the December 28th passing of Chuck's mother.



Recently
in the
Hospital

Mark Foege

CONGRATULATIONS TO:

Russ and Laurel Ortega on the birth of a baby boy. Jett James Ortega was born on December 2nd. John and Liz Marzano are the grand-parents.

Stan and Jan Larson, on the December 22nd birth of a great-grandson, Evan Havoc Luck.



PARISH RECORDS

New Members

12/13/2008

By Adult Baptism Christian Rosado

By Confirmation Tom Reeves
Debbie Reeves

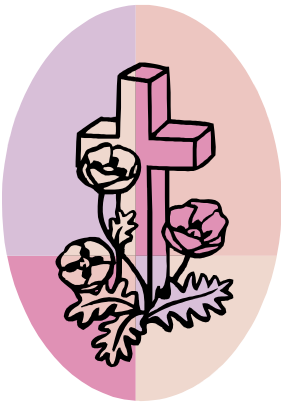
By Re-affirmation Holly Rosado
Joe Zelazny
Donna Zelazny

12/14/2008

By Child Baptism Camden LERoy Powell



Funerals & Memorials



12/05/2008 Gail Apple
12/15/2008 Ellie Coates
12/20/2008 Orville Adams
12/23/2008 Sharon Davidson



Dear Emmanuel Congregation,

Thank you so much for the luncheon in November and the gift card to Cabelas (my favorite place in the world!). Additionally, I wanted to thank everyone for all the support over the past six years, without your support, the youth could not have flourished as leaders in Emmanuel's family. I have mentioned to many of you, but wanted to reiterate the fact that I gained more from my time as the director of youth ministries, then the youth ever did from me. I was blessed to have received unconditional love and respect from our youth who are truly blessed and caring Christians. Our family is better for having them in our homes and I am better for having them in my heart. Thanks again for the wonderful send-off and support.

In His Service
Dutch Randall

Dear Emmanuel Friends,

Thank you for all the consideration, generosity and love you all shared with Ellie Coates over the years. You were truly the family she cherished and trusted.

Thank you,
Ellie's mother and siblings

Emmanuel Congregation.

Thank you for your gift of \$1000.00 to China Service Ventures. The CSV family thanks you and asks for your prayers and continuing support.

August Haugen,
Treasurer

Dear Emmanuel Congregation,

Your gift arrived at a very important time for us here at Spirit of Life Lutheran Church since we have continued to struggle with past due interest on our mortgage. We know that it was not without sacrifice on your part to be so generous to us. We could not be growing our church without your faithful help. We will remember you always in our prayers.

Sincerely,

JoAnn Smith,
Financial Planning Task Force

FAITH CIRCLE

Faith Circle will meet on the second Tuesday of each month at 10:30 A.M. in Room 202. Next meeting will be on Tuesday, January 13th.

Bring your sandwich!

**FAITH
HOPE
& LOVE**



MARTHA CIRCLE

Date: Wednesday, January 7th

Place: Fireside Room

Time: 12:00 P.M.

Pastor Gerstmann will lead a Bible Study.

ALTAR GUILD

Elizabeth Altar Guild will meet on Wednesday, January 14th at 2:00 P.M. in the Library.



QUILTING FUN!

**Tuesday mornings
10:00 A.M.
in the Fireside Room.**

On January 6th, we will resume quilting. We could use your assistance. You can brighten your day and at the same time help fill the Lutheran Welfare boxes with quilts to warm those in need. We can put any of your skills to use. Questions??? Call Barbara Kaup @ 460-0638.

Knit Wits

We meet in the Fireside Room

Mondays - 7:00 – 9:00 P.M.

If you would like to work on a portable craft, or would like to learn a portable craft, Knit Wits is for you! Instruction is always available on many types of crafts.

Everyone, including youth, is welcome to join us anytime!

Any questions call Elvine Carman at 752-3875.



COME JOIN US!

Friday, January 16th
11:30 A.M. - 1:30 P.M.

in the Sand Memorial Center

for a bowl of:

HEARTY SOUP AND CHATTER

This month's soups will be:
Turkey Noodle & Seafood Chowder
(Soup served till 12:30 P.M.)
salads & desserts always welcome

Open to everyone!!!



Free-will offering



BE A SILENT HERO!
SATURDAY, JANUARY 3, 2009
9:00 A.M. - 1:00 P.M.
in the Sand Memorial Center

Please come and donate much needed blood to help save lives.

HELP!!!



We're
Searching for
Office Volunteers

Anyone interested in spending a few hours a month volunteering to answer phones and do misc. office tasks, please call Linda Fuson at 752-6101 or 592-1270.

Thank you!



2008 What did we do

2009 What are we doing.

2008 What a year

A goal was set to send 250 School Kits in our Fall Shipment.

That Goal was exceeded !!! WE SENT 337 SCHOOL KITS

Add to that the 67 we sent in May, the total for the year was

404 School Kits

Along with the kits went beautiful warm quilts

May Shipment 62

November Shipment 22

84 Quilts

2009 Our Parish Projects - School Kits & Quilts

WE NEED YOUR HELP . . .

Making School Bags & Quilts

We will be there to help you along the way.

To help with School Kits contact

Joyce Farmer 752-2200 or

Cathy Mattson 564-2101

Meets 2nd Monday at 7:00 pm in the Fireside Room

To help with Quilts contact

Barbara Kaup 460-0638

Meets every Tuesday, morning in the Fireside Room

Look forward to seeing you there .

Help us make a difference

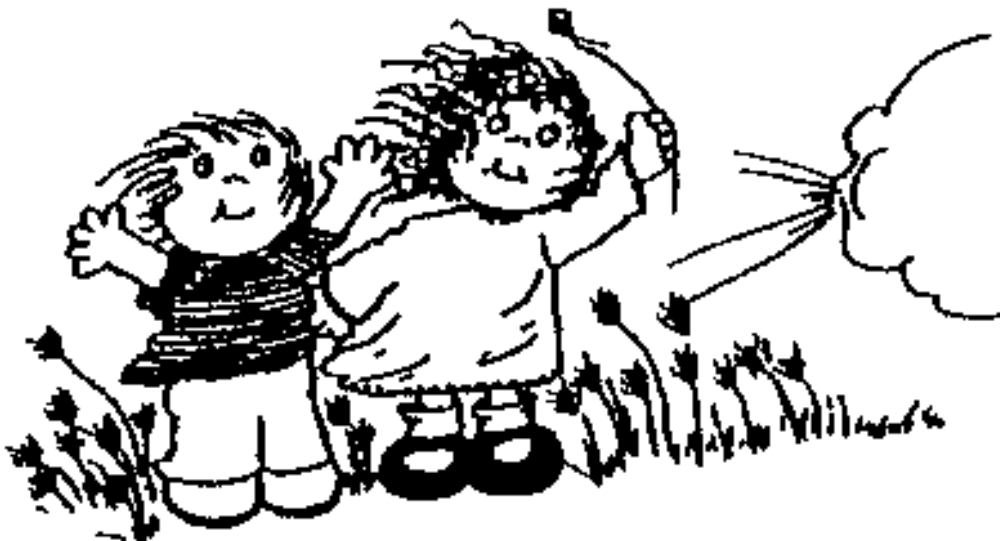


EMMAUEL LUTHERAN CHILDCARE

JANUARY 2009

Happy New Year. We hope your holiday season was fantastic. Our children have enjoyed the last year of learning. So many things have changed for them. We hope for a fun and interesting year for everyone. This month the children will be learning all about wintertime. Our verse is Ecclesiastes 3:1 "There is a time for everything and a season for every activity under heaven." We have some openings in our center. If you or someone you know needs childcare please have them call Wendy at 253-752-1195. Have a safe and joyous 2009.

Staff of ELCC



WORSHIP ASSISTANTS FOR JANUARY 2009

Lay Readers

Saturday	3rd	5:00 P.M.	Shirl Fickert	Saturday	17th	5:00 P.M.	
Sunday	4th	8:00 A.M.	Debbie Gallinatti	Sunday	18th	8:00 A.M.	Dr. Mike Gage
		11:00 A.M.	Elvine Carman			11:00 A.M.	Dr. Dale Wirsing
Saturday	10th	5:00 P.M.	Norma Lyslo	Saturday	24th	5:00 P.M.	Shirl Fickert
Sunday	11th	8:00 A.M.	Susan Alexander	Sunday	25th	8:00 A.M.	Debbie Olson
		11:00 A.M.	Sherry Ryan			11:00 A.M.	Dr. Russ Holtz
				Saturday	31st	5:00 P.M.	Marge Guthrie

Lay Leaders

Sunday	4th	9:00 A.M.	Sally Tetlow	Sunday	18th	9:00 A.M.	Dr. Russ Holtz
Sunday	11th	9:00 A.M.	Dr. Dan Cook	Sunday	25th	9:00 A.M.	Don King



Sun	Mon	Tue	Wed	Thu	Fri	Sat
January 2009 Happy New Year!				1 New Year's Day	2	3 9:00 Blood Drive 5:00 Communion Wor.
4 Communion Worship 8:00/9:00 10:00 Education Hour <i>Sunday School</i> <i>Adult Forum</i> <i>Adult Bible Study</i> 11:00 Communion Wor. <i>Baptism</i> 5:00 H. S. Youth	5 9:00 Men's Breakfast 10:00 TOPS 4:00 Girl Scouts 5:00 NW Flute 6:00 Youth Committee 6:30 Girl Scouts 7:00 Knit Wits 7:00 Boy Scouts	6 10:00 Quilting Ladies	7 12:00 Martha Circle 5:00 Confirmation 5:00 Handbells 6:10 Confirmation 6:30 Joyful Sound 7:00 Mid. School Youth	8 12:30 Adult Ed. Comm. 7:00 Lay School 6:30 Cub Scouts	9 ANNUAL REPORTS DUE	10 5:00 Worship Service
11 Worship Service 8:00/9:00 10:00 Education Hour <i>Sunday School</i> <i>Adult Forum</i> <i>Adult Bible Study</i> 11:00 Worship Service <i>Baptism</i> 5:00 H. S. Youth 6:00 Adult Instruction	12 9:00 Men's Breakfast 10:00 TOPS 5:00 NW Flute 7:00 Supp. & Assistance 6:30 Child Care Board 6:30 Youth Ed Comm. 6:30 Girl Scouts 7:00 Knit Wits 7:00 Boy Scouts	13 10:00 Quilting Ladies 10:30 Faith Circle 6:30 Resource Comm.	14 2:00 Altar Guild 5:00 Confirmation 5:00 Handbells 6:10 Confirmation 6:30 Joyful Sound 7:00 Mid. School Youth	15 7:00 Lay School 6:30 Cub Scouts	16 11:30 Soup Group	17 5:00 Communion Wor.
18 Communion Worship 8:00/9:00/11:00 10:00 Education Hour <i>Sunday School</i> <i>Adult Forum</i> <i>Adult Bible Study</i> 5:00 H. S. Youth 6:00 Adult Instruction	19 ECHOES DEADLINE 9:00 Men's Breakfast 10:00 TOPS 4:00 Girl Scouts 5:00 NW Flute 6:00 Worship & Music 7:00 Knit Wits 7:00 Boy Scouts	20 10:00 Quilting Ladies 7:00 Endowment Comm.	21 5:00 Confirmation 5:00 Handbells 6:10 Confirmation 6:30 Joyful Sound 7:00 Mid. School Youth	22 7:00 Lay School 6:30 Cub Scouts	23	24 5:00 Worship Service
25 Worship Service 8:00/9:00/11:00/10:00 10 Education Hour <i>Sunday School</i> <i>Adult Forum</i> <i>Adult Bible Study</i> 12:15 Board of Elders 5:00 H. S. Youth 6:00 Adult Instruction	26 9:00 Men's Breakfast 10:00 TOPS 5:00 NW Flute 6:00 B. S. Parents Mtg. 6:30 Girl Scouts 6:30 Finance Comm. 6:30 Gospel Ladies 7:00 Knit Wits 7:00 Boy Scouts	27 10:00 Quilting Ladies 6:00 Church Council	28 5:00 Confirmation 5:00 Handbells 6:10 Confirmation 6:30 Joyful Sound 7:00 Mid. School Youth	29 7:00 Lay School 6:30 Cub Scouts	30	

*“Through Christ’s friendship and love
we seek to become richer in faith
and to share with others.”*

**EMMANUEL LUTHERAN CHURCH
JANUARY ECHOES 2009**



***Come Join Us
In Worship***

Saturday - 5:00 P.M. - Contemporary Worship

Sunday - 8:00 A.M. - Contemporary Worship

Sunday - 9:00 A.M. - Celebration! Worship

Sunday - 11:00 A.M. - Traditional Worship

CHILD CARE NURSERY

(Infants - 3 year olds)

Available: All Sundays

(7:45 A.M. - 12:15 P.M.)

No child care provided on Saturday evenings