

Emmanuel Lutheran Church



ECHOES

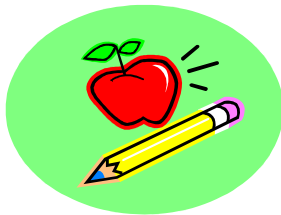
A Member of the Evangelical Lutheran Church in America

Volume 48, Issue 9

1315 North Stevens, Tacoma, WA 98406

September 2009

Inside this issue:



Fall Kick-Off Schedule	1
Pastor's Page/Update on Pastor Shaw	2
Endowment Fund Committee	3
China Service Ventures	4
Change for China	5
Office Contact Information/Website	6
Church Council Highlights	7
Forum/ Adult Bible Study/Adult Instruct.	8
Lay School	9
Budget Committee/Change of Address/Echoes Deadline	10
In The Hospital/Sympathy/ Congratulations/Please pray	11
Parish Records	12
Hands working together to do God's work	13
Lutheran World Relief	14
Youth Happenings	15
Childcare News	16
Blood Drive/ Fall Kick-Off Picnic	17
Altar Guild/Knit Wits/Faith Circle/ Martha Circle/Quilting Ladies	18
Fundraiser/Soup Group/Choir Notes	19
Worship Assistants	20
Monthly Calendar	—

NEW FALL WORSHIP SCHEDULE

FALL SUNDAY KICKOFF!!!!

September 13

First Sunday of our regular schedule.

Worship service times will change to:

8.30 a.m. (TRADITIONAL) in the sanctuary

9.45-10:45 a.m. Education Hour

Sunday School

Youth Forum

11.00 a.m. (CELEBRATION!) in the Sand Memorial Center

6:00 p.m. - What Lutherans Believe Sundays in Room 200.

September 20 - Education Hour 9:45 a.m.

Sunday School

Budget Forum

September 27 - Education Hour 9:45 a.m.

Sunday School

Adult Bible Study

Monday, September 28 thru Thursday, October 1

10:00am and 7:00pm - Lay School of Theology in Room 200.



Also, at 12:15 following the 11.00 service there is our Fall Kick-Off Picnic/Potluck!!! Please make sure you bring your favorite dish!!!

For more information, look inside!

From the Pastor's Desk.....

Action And Being Acted Upon

In one particular Peanuts strip Charlie Brown is chatting with Peppermint Patty, and in the midst of their conversation Charlie Brown indicates to Patty the exciting news that "...right after church next Sunday, we're all going on a picnic..." Upon hearing this Patty interrupts forthrightly and declares, "I didn't know your family belonged to a church." "Sure doesn't yours?", retorts Charlie Brown. Patty sadly responds, "They used to...Now they belong to a coffee house."

Undoubtedly, as summer comes to a close once again jobs start to return to their usual frantic pace. There are commitments galore that are scattered across our agendas ranging from PTA mom to sports coach. For younger adults school/studying/sports/social life begin to get larger, larger and larger. Time becomes more and more of a rare commodity. It seems as if the only solace and succor we can find is at the coffee shop where, ironically, very often the topic of conversation will be our work plans for the next week! All we know is ACTION, ACTION, and more ACTION. Do, Do, Do! We all tend to think, at some time or another, that the church is merely one more item on our long litany of "to do's" for the next year.

Well, I don't have a cache of biblical witticisms that can act as a 7-step plan (Dr. Phil like) for a healthy and vibrant church life. We all know how vogue the self-helpism market is at this time, right? But that especially is just another anchor around the neck of those who follow Christ. It is like throwing lead weights to a drowning person. We are told by such gurus is that what we need is to do more! But into the midst of this rampant chaos, however, comes the voice of our Lord Jesus Christ. "Come to me, all you that are weary and are carrying heavy burdens, and I will give you rest. Take my yoke upon you, and learn from me...and you will find rest for your souls." (Matt. 11:28-29). Remember, that above all else in relation to Jesus Christ, you are the one who is acted upon, not the actor. Here there is no self-help plan, no program of rehabilitation. Just Jesus. Jesus and his love and grace. John Chancellor, an old news analyst and commentator, is said to have remarked once that if you want to make God laugh, tell him your plans! Why is this humorous to the divine majesty? Because He has already chosen us and made our action toward Him so passive. All we are able to do is simply receive his love, as the earth receives rain from the sky. Jesus Christ bestows grace upon grace to us sinners, without our deserving or merit. It is a free and wonderful gift! Not the end to the vexations of our life, but simply the promise of his radiant peace, "which passes all understanding". Jesus is the actor; we are the ones acted upon. Like my seminary professor Gerhard Forde said once, "I expect that is our only hope in the end, and that God will not have too big a laugh at our expense."

Because of Him,

Pastor Shaw

en·dow·ment (én-dou'mént)

n. Funds or property donated to an institution, individual, or group as a source of income.

*I'm so optimistic I'd go after Moby Dick in a row boat
and take the tartar sauce with me.***

Emmanuel Lutheran Church Heritage Society

The Emmanuel Lutheran Church Heritage Society exists for the purpose of acknowledging and giving thanks to all members and friends of the congregation who, in their estate planning, have in some manner made provision for a gift to the mission of the Christian community.

The donors listed below included/have included a gift to the church in their estate plan.

Emma Archer*

Gertrude Krause+*

Tryg+ and Pearl+ Blix*

Lucille Larson+*

Judd+ and Nancy+ Doughty*

Sherry Loseke

Bob and Jan Elmer*

Larry+ and Audrey+ Martin*

Dick and Mary Foege*

Frank and Trudy Rossiter*

Mike and Judy Gage*

Nancy Savage*

Al and Gladys* Gerstmann

Jim and Myrna Sparks*

Archie+ and Olivia+ Heany*

Mary Helen Thompson+*

Patty Jalbert*

Juanita Torre+*

Winifred Kildahl*

Dagny Vaswig*

Have you considered a “cash” or “deferred gift” to the church In Honor or In Memory of a loved one? To learn how, ask a member of the Endowment Fund Committee: Sherry Loseke, Paul Robson, Lynne Rosellini, Mike Kapphahn, Jim Sparks or our Fund Development Advisor, Patty Jalbert.

**Zig Ziglar's Little Book of Big Quotes

Patty Jalbert
September, 2009

100 Words from China Service Ventures

“Start Planning Now! 2010 Service Opportunities in China”

It is never too early to begin planning how you might want to serve our Lord in 2010. China Service Ventures (CSV), a Lutheran 501 (c) 3 non-profit working in China, offers great opportunities for adults and youth to serve.

Volunteer teachers are needed to train Chinese English Teachers in a short-term, intensive ESL 3-week course. The cost for this service opportunity is \$1,300 not including airfare and China Visa. Dates are July 4 to August 2 with possible added trips to Xi'an and Tibet.

CSV also invites high school youth, either as a group or as individuals, to work with Chinese youth in serving those less fortunate in rural China. The cost for this service opportunity is \$1,010 not including airfare and China Visa. Dates are July 14 to 29.

There you are! Two great ways to serve our Lord by serving others in rural China. For more information call 1.877.408.7056 or email steverayCSV@aol.com. Join CSV as we continue to serve in China's rural regions with faith, hope, and love.

Grace and Peace,

Steven Ray, Director

China Service Ventures Relations

1.877.408.7056

steverayCSV@aol.com

Steven F. Ray
Director for CSV Relations
www.chinaserviceventures.org
1.877.408.7056
CSV is an independent Lutheran non-profit organization
"Not to be Served, but to Serve"

China Service Ventures 2009

Not to be served, but to serve—

that's what we're all about. China Service Ventures

希望

Change for China Nutrition Project

China Service Ventures has embraced the people of Henan. In doing so, their health and well-being has become of utmost importance. The work being done to address the issues in this area include: Health Assessments/Nutrition Screening, Partnership with Chinese nursing students, and Health Education.

Project Nutrition will provide a meal for students at the vocational school where they are training to be nurses. As part of this program the students will do health assessments on the children ♥ in rural villages

for China Service Ventures. This project is from June until December.

Cost is \$110 per student

Here is how you can be involved in this project:

Fill a Take-Out Box* with change
(boxes are available in the narthex)

or

Make a donation in the offering plate
(be sure to mark it for CSV Nutrition Project)

*You may return your filled box at anytime to the church office



There are only 91 days to reach
our goal of 100 students

If you have questions, please contact: Cathy Mattson at 564-2101.



WE HAVE A WEBSITE!
CHECK US OUT AT:
www.emmanuel-tacoma.org

ECHOES newsletter is now available on the website!

Contact Information

Church Office.....752-3571
 Childcare Office.....752-1195
 Office Fax Number.....752-6078
 Emergency Phone Number468-4221

Office Extension Numbers

Cathy Porter, Secretary.....Ext. 11
 Rev. Daniel Shaw, pastor.....Ext. 12
 Rev. Richard Foege, Pastor.....Ext. 13
 Mary Foege, Director of Music.....Ext. 14
 Judy Bebich, Program Coordinator.....Ext. 15
 Wendy Hrvatin, Childcare DirectorExt. 19
 Laurie Moren, Youth Director.....Ext. 23

E-mail Addresses

Church Office.....office@emmanuel-tacoma.org
 Daniel Shaw, Pastordshaw@emmanuel-tacoma.org
 Richard Foege, Pastor.....rhfoege@emmanuel-tacoma.org
 Steven Ray, Outreach Pastor.....steveraycsv@aol.com
 Program Coordinator..... progco@emmanuel-tacoma.org
 Sunday School.....sundayschool@emmanuel-tacoma.org
 Youth Director.....lauriemoren@hotmail.com
 Emmanuel Lutheran Childcare Center.....emmanuelutheranccc@yahoo.com

Web Sites

Emmanuel's Web Site.....www.emmanuel-tacoma.org
 Southwest WA Synod Web Site.....http://www.lutheranssw.org

CHURCH COUNCIL HIGHLIGHTS

President.....Angela McDougall
Vice President.....Dr. Dan Cook
Finance.....Doug Payne
Secretary.....Nancy Savage
Education.....Dennis Dale

Resource.....Roger Ahrens
Worship.....Russ Holtz
Fellowship.....Maylin Clark
Outreach.....Joan Kaplin

CHURCH COUNCIL HIGHLIGHTS

August 25, 2009 meeting

1. **Doug Payne, Finance Chairperson reported the Balance and Income statements generated by the new accounting system look good. There remains tweaking to be done to finalize the fund and expense-to-budget reporting.**
2. **Daycare provided the start-up funds for the pre-school. Daycare will be working with Future Steering to sync up the by-laws with the Church's Constitution and By-Laws.**
3. **The budget process is under way. All budget requests from committees are requested by September 8th, 2009.**
4. **L.E.A.F. scholarships were given out at the 08/09 11:00 AM worship service.**
5. **School kits are progressing toward the targeted goal of 200. The committee is in need of help making the school kits bags – contact Joyce Farmer/Cathy Mattson.**
6. **Youth are planning their fund raisers for up-coming mission trips.**
7. **Gave approval of Matt Shouse as a member of the Budget Committee.**
8. **Approved the recommendation from Worship/Music Committee:**

5:00 PM	Saturday	Sanctuary	Contemporary		
8:30 AM	Sunday	Sanctuary	Traditional		
9:45 AM	Sunday	Education	Hour		
11:00 AM	Sunday	Sand Center	Celebration		

9. **Approved amendments to the 07/2009 Administrative Policies removing the sick leave and revising the vacation benefits.**
10. **Requested Jim Ellingson, Bob Mattson and Pastor Foege (subject to their agreement) to review the 'offering first chance' to the purchase of the house next door to the garage. (The Church is still under the mandate from the City of Tacoma to make every effort to acquire adjacent property.)**

ADULT FORUM UPDATE!

Sunday at 9:45 a.m. in Room 200.

- Sept. 13 Youth Forum - Youth Mission Trip, *Laurie Moren*
- Sept. 20 Budget Forum, *Katy Patjens*
- Sept. 27 Sunday Adult Bible Class, *Letters from Prison from the Book of Ephesians*, begins. This class will take the place of Adult Forum with the exception of special budget forums that will be scheduled in this time slot.

SUNDAY BIBLE STUDY

LETTERS FROM PRISON

More than any other book in the Bible, Ephesians displays the great purpose and plan of God for the church. This letter was written by the Apostle Paul, while he was in prison, to the assembly of believers at Ephesus. In this letter, Paul describes the essence of our Christian faith and what that means for our daily walk with Christ. **JOIN US at 10:00 AM IN ROOM 200 THIS FALL** as Pastor Daniel Shaw takes us through this exciting book of the Bible!!!! Look for more announcements in your weekly bulletin!

CLASS BEGINS SEPTEMBER 27!!!! Please sign up for this class on the sign up sheet in the Narthex.

IT'S HAPPENING AGAIN!

WHAT LUTHERANS BELIEVE

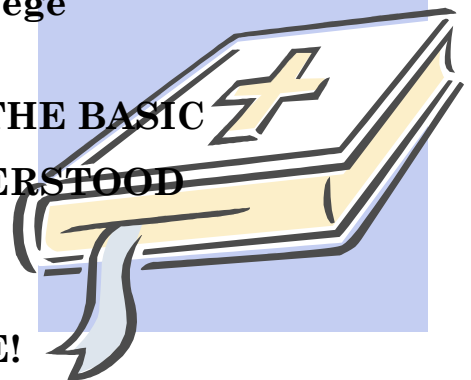
BEGINNING SUNDAY, SEPTEMBER 13TH

EVERY SUNDAY at 6:00 P.M. IN ROOM 200

Taught by Pastor Dick Foege

**AN OPPORTUNITY TO LEARN THE BASIC
CHRISTIAN BELIEFS AS UNDERSTOOD
BY LUTHERANS**

EVERYONE WELCOME!



MARK YOUR CALENDARS!

LAY SCHOOL of THEOLOGY

THE APOSTLES' CREED

taught by

DR. MARC KOLDEN

Professor emeritus, Luther Seminary

MONDAY through THURSDAY

September 28 – October 1

every morning

10:00 AM

every evening

7:00 PM

Tuition = \$15.00

Dr. Marc Kolden, retired in 2008, after teaching at Luther Seminary for 27 years. He was a professor of systematic theology. He also served for several years as the Academic Dean of the seminary. Prior to teaching at the seminary, he was a parish pastor in Helena, Montana.

THE BUDGET COMMITTEE

The Budget Committee wants your opinions about what is important to you, our congregational members, as we begin to develop the Budget for 2010. During the Fall all congregational members will be invited to attend open hearings to be scheduled during Adult Forum. The first hearing is scheduled for September 20, 2009. This is your chance to give your input on all of items on the Budget. We consider your input, edit the Budget and present it to members at another Adult Forum hearing which is scheduled for October 11, 2009. At this open hearing we will present you a Draft 2010 Budget with recommended dollar amounts that we have assigned to each line item. We will consider all comments on the Draft 2010 Budget as we make additional adjustments. The Budget Committee then presents the Draft 2010 Budget to the Church Council for approval at a Church Council meeting. Church Council may elect to make changes to the draft budget. The 2010 Budget is presented to the congregation for final approval at the Annual Congregational Meeting in November.

We hope that you will come and give us your input. We don't know what you want unless you tell us!

Katy Patjens, Budget Committee Chair
kpatjens@juno.com



Moving? Or Temporarily Away?



PLEASE!!! Save the church some money!



Please notify the church office of your **new address** and **phone number** so we can update our records. **You can do this on a worship card or call the church office at 752-3571.** This current information is greatly appreciated. It also saves the church **a lot of money** when we don't have to pay the return postage. When we have to re-send mail such as offering envelopes and other bulk rated mail, we do not get the bulk mail rate again. And it costs a lot of money to send at the regular rate. Please notify the church office if your address changes.



ATTENTION!!! DEADLINE: OCTOBER 2009 ECHOES

MONDAY, SEPTEMBER 21ST

Please note that all October 2009 ECHOES articles are due in the church office on ***Monday, September 21st.*** If your article is not received by that time, it will ***not*** be published in the upcoming issue. In order for members to receive the ECHOES by the first of each month, you must have all of your information turned in by the due date. You may e-mail your articles and information to Judy in the church office at the following address.

judy_emmanuel22@hotmail.com

RECENTLY IN THE HOSPITAL

NORMA DAUER
MARY ELLEN GLOCKNER
SHEILA HUGHES
SHARON LANGREN



Emmanuel congregation extends its deepest sympathy to:

NICOLE ANDREWS on the death of her husband, Andrew Cline who died

CONGRATULATIONS TO:

DEREK and **AMY WEST** on the birth of a son on August 11th. Andy and Gail Stevens are the grandparents and Gail Markham is the great-grandmother. Congratulations to all!

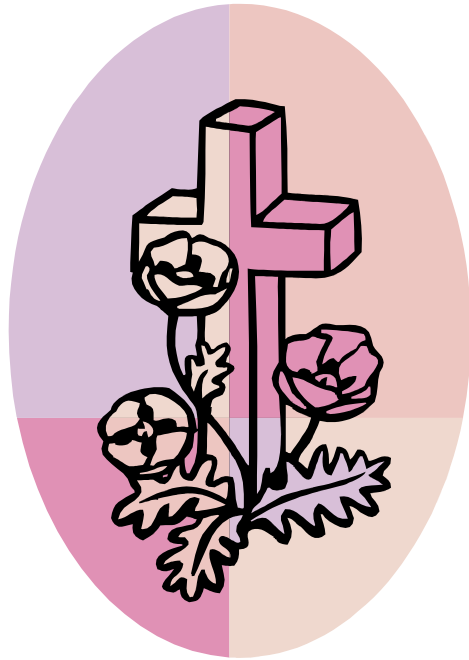
Emmanuel's Adult Education Committee is pleased to announce the following recipients of L.E.A.F. (Lutheran Education Aid Fund) scholarship awards for 2009-2010:

- Sally Ann Dale - Washington State University
- Amy Lynn McCoy - Tacoma Community College
- Kelsey Rae Frank - Whitworth University
- Brendan Fitzgerald - Pacific Lutheran University
- Jeana Gallinatti - Washington State University
- Kjerstin Genita Moren - Tacoma Community College

Please pray for **J.D. JOHNSON**. He joined the United States Army and left for duty on August 25th. J.D. is the son of Jeff and Kristy Johnson. Let us pray for the safety of J.D. and all those who serve our country so we can have our freedom.



PARISH RECORDS



Funerals & Memorials

07/12/2009 Esther Pearson

Hands Working Together



to do God's Work!

A BIG THANK YOU TO:

all the volunteers who help with the many tasks at Emmanuel. Those that work in the office and assist with the many office tasks, such as mailings and Lay School registration. Those who serve on various committees, volunteers who serve as worship assistants, lay readers and counters. All who bring treats to the office for us to enjoy. Our musicians who provide the beautiful music for our services and those who help with the repair tasks and yard work, and so much more. You are so very appreciated, we couldn't do it without you!!!

We are *still* in need of a member who is willing to volunteer to drive the van on the second Saturday of each month. We also need someone for the 5th week. There are only a few days in the year where a driver would be needed. This service enables our members who do not drive an opportunity to join us in worship each week. Please contact the church office if you are able to offer this service.

We are always in need of volunteers who are willing to donate some of their time to help with the many tasks at Emmanuel. If you would like to help with the ushering, serving communion, lay reading, serving on a committee, setting up and cleaning up for our fellowship events, or working in the church office let us know by calling the church office at 752-3571. Thank you!

Dear Emmanuel,

I write to you with heartfelt thanks and deep gratitude for the enormous amount of support you have given me over the years as I have worked on my doctorate at Luther Seminary. There is no doubt that your support has made the difference in my ability to work on this degree. It has been a long time in coming. I am currently in the midst of writing the dissertation. This means the end is in sight! I have been given so much through this opportunity and your commitment has not gone unnoticed nor been taken for granted. I will keep you posted as the completion of this degree draws near.

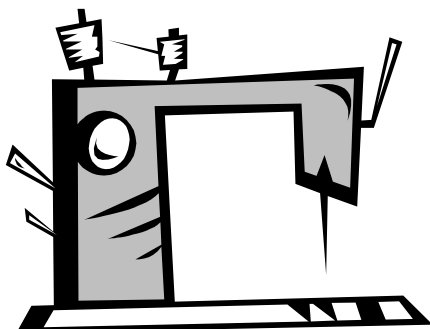
Peace in Christ,

Marney Fritts



Thank YOU for all your help in collecting school supplies for our bags - we are still in need of some items – check the poster in the narthex to see what exactly is needed.

HELP! WE NEED HELP MAKING SCHOOL BAGS



Can you, will you make time –
to sew a few straight seams,
turn down fabric to sew a hem and attach handles.
If you want we can add the handles for you.

“Build a Bag” kits are available that include fabric cut to size, handles, and simple instructions. If you are interested and would like one or more contact Joyce Farmer at 758-2200 or Cathy Mattson at 564-2101. .



We are always looking for more people who would like to help with our projects - We meet once a month on the First Monday at 7:00 pm in the Fireside Room. Come and join us we ALWAYS have FUN working on projects together . . .

In October we will have a “Stuff the Bags Party”
watch the September Echoes for the time and date!!!

SEPTEMBER



Youth Happenings

High School Youth

- High School Youth will meet each Sunday evening from 5-7 p.m. beginning Sept 20th, for fun and fellowship. Come see what it's all about. Remember to bring your friends.
- Mission Trip 2009 youth– Mark your calendars for Sunday, September 13th – this is when we present our trip to the congregation.
- The new Medical Release forms are ready to be picked up. They run the entire school year.
- We will be selling Plush Pippin Pies October 2nd. Sign up to man the pre-sell table September 20th or 27th. Don't forget 9/13 10:00 a.m. education hour.

ATTENTION

Mission Trip 2010

All High school youth interested in being a part of next summer's mission trip must attend the

Introductory meeting:

September 16th-6:30 p.m.

Middle School Youth

- Middle School Youth will meet each Wednesday evening beginning in October from 6:30 –8:00 p.m. (subject to change). All youth grades 6-8 are invited to join in, and remember to bring your friends.
- Confirmation classes will start Sunday September 20th during the Sunday School hour.

Youth Offering

Each year your offerings go to help our local community and those we serve on our annual mission trip. Envelopes are available in each classroom.

Opportunities to help Emmanuel this fall

- Co-teach a Sunday School Class
- Family fun nights
- Youth Nights
- Halloween Party
- Fellowship dinners
- Greeters, Readers, Ushers



Emmanuel Lutheran Childcare

September 2009

Another school year has passed and we have some of our friends who are leaving us for kindergarten. We want to say good luck, best wishes and remember to visit. We will miss all of you very much.

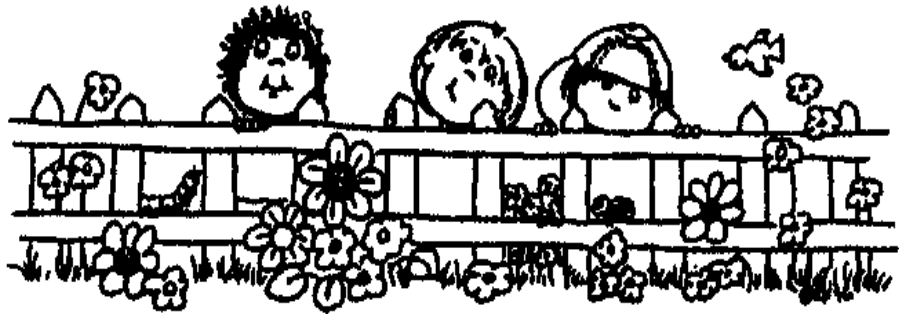
We will be having an open house for the congregation, on September 13 from 12:30 to 1:00 p.m. Please come visit our centers to see the improvements, and meet some of our teachers. We will be glad to answer any of your questions.

The theme for this month will be: Me, my family and my community. We will be closed on September 8, 2009, in observance of Labor Day.

The childcare center has openings, in the preschool and pre-k room. If you know someone who is interested, or who may have a need, have them call the childcare office at 253-752-1195.

Have a great month,

ELCC staff



.....
Sunday School Scoop!

Sunday School begins on September 13th! Registration forms are now available. We have some wonderful surprises planned this year – keep your eyes open!

The Sunday School Teacher's Installation is on September 13th at the 11:00 service – we appreciate your support and prayers as we begin this new year of learning.

If you have any questions please call the church office at 752-3571.

.....

BLOOD DRIVE



There will be a blood drive on Saturday, September 12th
in the Sand Memorial Center.

9:00 A.M. — 1:00 P.M.

Contact Sharon Anderson @ 759-6217 if you have any
questions.

SILENT HEROES FOR JUNE 27TH WERE:

Sharon K. Anderson

Debbie L. Frisina

Michael L. Gage

Mark A. Gallinatti

Mary L. Glaser

Eileen G. Hudak

Jordan A. Hudak

Sheila D. Hughes

Peter P. Langdon

John P. Ruze

Nancy J. Savage

Kerry J. Storset

Joseph J. Zelazny

Thank you for helping save lives!

FALL KICK-OFF POTLUCK PICNIC Sunday, September 13th

To celebrate Fall Kick-Off Sunday, we are planning a *Fall Kick-Off Potluck Picnic at 12:15 p.m.*, following the 11:00 a.m. worship service.

We will need volunteers to do the grilling and also for set-up and clean-up duties. We need some baked beans, salads, chips and watermelons. Fellowship will provide the hot dogs and hamburgers.

There will be sign-up sheets in the church narthex. Please stop by after the service you attend and sign-up.

We will have a dunk tank and Pastor Shaw, among others, has volunteered to sit in the dunk tank, so come and try to dunk one of our members. It will be lots of fun so come join us and celebrate Kick-Off Sunday at Emmanuel.



ELIZABETH ALTAR GUILD

**September 16th at 7 PM.
In the Library**

We on Emmanuel's Elizabeth Altar Guild will be meeting in the church library on Wednesday September 16th at 7 PM. We would welcome anyone interested in finding out more about our group and what we do to help with worship services at Emmanuel. We meet once a month except for July and August, and our meetings are usually the third Wednesday of the month, sometimes in the afternoon or evening, so those who work during the day can attend occasionally. We are looking for additional help-please consider joining us. For more information please call Lee Hunt (253) 566-0125.

Hostesses for the month of September are Mary Ellen Glockner, Verna Joes & Donna Zelazny.

KNIT WITS

We meet in the Fireside Room

Mondays - 7:00 – 9:00 P.M.

If you would like to work on a portable craft, or would like to learn a portable craft, Knit Wits is for you! Instruction is always available on many types of crafts.

Everyone, including youth, is welcome to join us anytime!

Any questions call:

Elvine Carman at
752-3875.



FAITH CIRCLE

Join us for our first meeting after the fall schedule begins on Tuesday, September 8th at 10:30 a.m. in Room 200. Everyone is welcome to come and join us anytime!

MARTHA CIRCLE

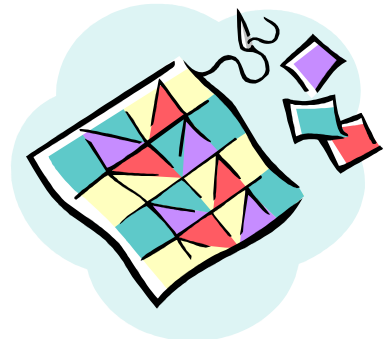
There are no meetings scheduled at this time.

QUILTING FUN!

Our summer break is over and now we are ready to begin again on Tuesday, September 8th at 10:00 a.m. in the Fireside Room.

Can you tie a knot? Can you operate a sewing machine? We could use your assistance to help fill the Lutheran Welfare boxes with quilts to warm those in need. We can put any of your skills to use.

Barbara Kaup (460-0638).



Fundraiser set for Sept. 9th

Please join us for a fundraiser, to support the family of Katie Flyte, 27, who passed away from the swine flu and acute respiratory distress syndrome, while six months pregnant. The baby was delivered by C-section and is doing OK at Mary Bridge Hospital.

Joeseppi's Italian Ristorante, 2207 No. Pearl St., will donate 25% of all food purchased between 4-8 pm on Sept. 9th to the Flyte Family Fund.

For more information, or to donate outside of the fundraiser night, call or email Sue Densley (253-222-4720/ssdensley@msn.com) or Carol Mathewson (253- 651-7677/carolmathewson@gmail.com).

SOUP GROUP IS BACK!

COME JOIN US

the *3rd Friday* of the month

September 18th, 11:30 A.M. - 1:30 P.M.

in the Sand Center

for a bowl of:

HEARTY SOUP AND CHATTER

This month's soups will be:

Clam Chowder & Turkey Noodle

(Soup served till 12:30 P.M.)

We welcome salads & desserts

Open to everyone!

(Free-will offering)

CHOIR



NOTES!

The time is approaching again for all of Emmanuel's musicians to come together and make beautiful music. The following schedule begins this month.

WEDNESDAY - 6:30 p.m. - Joyful Sound
Sept. 9th in the Balcony

(every week)

WEDNESDAY - 5:00 p.m. - Handbells
Sept. 16th in Room 200

(every week)

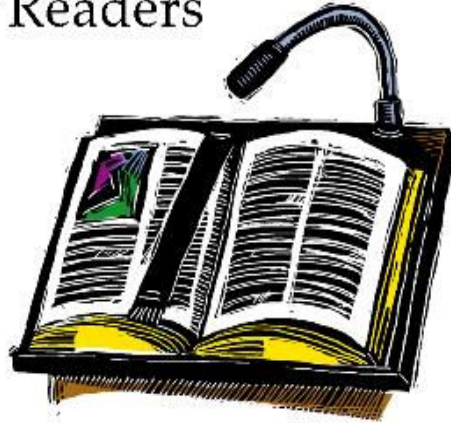
THURSDAY - 5:00 p.m. - Choir Academy
Sept. 24th in Room 200

(every week)

MONDAY - 6:30 p.m. - Gospel Ladies

WORSHIP ASSISTANTS FOR SEPTEMBER 2009

Lay Readers



and Lay Leaders

Saturday 5th 5:00 PM Marge Guthrie
Sunday 6th 8:30 AM Susan Alexander
10:00 AM Elvine Carman

Saturday 26th 5:00 PM Shirl Fickert
Sunday 27th 8:30 AM Debbie Olson
11:00 AM Donna Nelson

Saturday 12th 5:00 PM Connie Scusselle
Sunday 13th 8:30 AM Mel Neighbors
11:00 AM Dr. Dan Cook

Saturday 19th 5:00 PM Will Holtz
Sunday 20th 8:30 AM Dr. Mike Gage
11:00 AM Sally Tetlow



September 2009

Sun	Mon	Tue	Wed	Thu	Fri	Sat
		1 6:45 Budget Comm. 7:00 Memorial Comm.	2 6:30 WordAlone Mtg.	3	4	5 5:00 Communion Wor.
6 8:30/11:00 Communion Worship	7 Labor Day Observed Church Office Closed Childcare Closed 7:00 Knit Wits	8 10:00 Quilting Ladies 10:30 Faith Circle 5:30 TOPS 6:00 Youth Committee 6:30 Resource Comm. 7:00 Girl Scouts	9 6:30 Joyful Sound	10 12:30 Adult Ed. Comm.	11	12 9:00 Blood Drive Hunger Offering Received 5:00 Worship Service
13 Hunger Offering Received Fall Kick-Off Sunday 8:30 Worship Service 9:45 Education Hour <i>Sunday School</i> <i>Youth Forum</i> 11:00 Celebration! Worship <i>S. S. Teacher Installation</i> 12:15 Fall Kick-Off Potluck Picnic	14 10:00 TOPS 4:00 Girl Scouts 5:00 NW Flute 6:30 Childcare Board 6:30 Girl Scouts 7:00 Support & Assist. 7:00 Knit Wits 7:00 Boy Scouts	15 10:00 Quilting Ladies 5:30 TOPS 6:45 Budget Comm.	16 5:00 Handbells 6:30 Joyful Sound 6:30 Mission Trip Mtg. 7:00 Altar Guild Meeting	17 6:30 Cub Scouts	18 11:30 Soup Group Turkey Noodle/Clam Chowder)	19 5:00 Communion Wor.
20 8:30/11:00 Communion Worship 9:45 Education Hour <i>Sunday School</i> <i>Budget Forum</i> 12:15 Board of Elders 5:00 High School Youth	21 ECHOES DEADLINE 10:00 TOPS 5:00 NW Flute 6:00 Worship & Music 6:00 Boy Scout Mtg. 7:00 Girl Scout mtg. 7:00 Knit Wits 7:00 Boy Scouts	22 10:00 Quilting Ladies 5:30 TOPS	23 5:00 Handbells 6:30 Joyful Sound 7:00 Middle Schl. Youth	24 5:00 Choir Academy 6:30 Cub Scouts	25 10:00 Tacoma Mom's Club	26 5:00 Worship Service
27 8:30/11:00 Worship Service 9:45 Education Hour <i>Sunday School</i> <i>Adult Bible Study</i> 5:00 High School Youth	28 10:00 TOPS 10:00 Quilting Ladies 10:00 Lay School 5:00 NW Flute 6:30 Finance Committee 6:30 Gospel Ladies 6:30 Girl Scouts 7:00 Lay School 7:00 Knit Wits 7:00 Boy Scouts	29 10:00 Quilting Ladies 10:00 Lay School 5:30 TOPS 6:00 Church Council 6:45 Budget Comm. 7:00 Lay School	30 10:00 Lay School 6:30 Joyful Sound 7:00 Lay School			

*“Through Christ’s friendship and love
we seek to become richer in faith*

EMMANUEL LUTHERAN CHURCH

SEPTEMBER ECHOES 2009

READ, LEARN AND ENJOY!

END OF SUMMER WORSHIP SCHEDULE

Saturday, September 5th & Sunday, September 6th

Saturday - 5:00 PM - Contemporary Communion Worship

Sunday - 8:30 AM - Traditional Communion Worship

Sunday - 10:00 AM - Traditional Communion Worship

NEW FALL WORSHIP SERVICES

FALL SCHEDULE RESUMES ON SUNDAY, SEPTEMBER 13TH

**Saturday - 5:00 PM - Contemporary Worship -
in the Sanctuary**

**Sunday - 8:30 AM - Traditional Worship -
in the Sanctuary**

**Sunday - 11:00 AM - Celebration! Worship -
in the Sand Memorial Center**

CHILD CARE NURSERY

(Infants - 3 year olds)

Available: All Sundays

(8:15 AM - 12:15 PM)

(no childcare provided on Saturday evenings)