

# Emmanuel Lutheran Church



## ECHOES

A Member of the Evangelical Lutheran Church in America

Volume 50 Issue 12

1315 North Stevens, Tacoma, WA 98406

December 2010



### Don't forget to pick up your copy of the Echoes newsletter this month!

We are no longer going to mail the newsletter. You may pick up a copy on the back table after the service you attend or you may have it sent to you via e-mail. If you would like to be on the e-mail mailing list, please sign up on the sheet available to you outside the Sanctuary or call the church office. You may also view it from Emmanuel's website at [www@emanuel-tacoma.org](http://www@emanuel-tacoma.org)

Newsletter Mailing Change/Pastor's Desk	1
Christmas Worship Schedule	3
Lay School	4
Annual Reports Notice	5
Office Contact Information, Website	6
Change of Address, Echoes Deadline	7
Letters, Blood Drive, Sympathies, In the Hospital, Parish Records	8
Soup Group, Boxes for the Troops packing party, Knit Wits, flower charts, Quilting ladies, Altar Guild	9
Lutheran World Relief	10
Ministry News	11
Childcare News	12
Boxes for the Troops Project	13
Lay Readers	15
Monthly Calendar	—

### From the Pastor's Desk!

#### ADVENT

Advent is a strange word to us. Strange I suppose in the same way the words "Epiphany", "Lent" and "Pentecost" are strange. We do not use these words in casual conversation with our friends, or to even mark time with as the church calendar does. These words are just plain weird, especially the word Advent. Advent seems to be a word that points to a different culture with different practices, one that is foreign to us moderns, one that is somewhat meaningless. It is such an uncelebrated, insignificant portion of the church year it makes one wonder why we even have it. Why don't we just write it off and get to the "good" stuff, which is Christmas, like all the department stores and malls do?

Advent, of course, means "coming" or "beginning" or "start". There is, however, a duality to Advent. The first piece of that duality is the obvious aspect: Advent is the waiting period for the coming of the Christ child into our midst. The second piece is one that is not very popular: Advent is the waiting for Christ to come again as the judge of the world. The liturgical theologian James White put it this way; "Advent is both a time of thanks for the gift of Christ to us in past time and anticipation of his second coming. It contains both threat and promise." Both types of texts appear in the lectionary for Advent, Luke 21.25-36 and Luke 3.1-6.

One is judgment from the mouth of Jesus, while the other is a word of promise from the mouth of John the Baptist, the promise of God coming to us in Jesus Christ. We would do well not to bypass either of these characteristics of Advent. As a matter of fact, we would do well not to bypass Advent at all! Why? Because contained within the season of Advent is the truth – the truth about God, and also the truth about us. That is, Christ has come and will come again. We are forgiven, but we are, and always will be sinners, so we are called to examine ourselves in light of his second coming. That is the truth.

So why do we keep Advent in our Christian lives? Because Advent *keeps* us tucked away where God wants us to be. God wants us to have a time of waiting. Of course the world will not do this. Stores will affront their buildings and walls with dazzling red and green pigments to stimulate your eyes and checkbooks. Salvation Army workers will ring their bells through the whistling winds, and the numerous Santas will parade through the streets with glee on their face and volume in their cries of exuberance. The world will go on without you in this respect. But if you have an ear for it all you will hear it. If you listen closely and carefully I guarantee that you will hear it. You will hear it in the chaotic midst of daily life, the word of life, “the voice of one crying out in the wilderness: Prepare the way of the Lord, make his paths straight. Every valley shall be filled, and every mountain and hill shall be made low, and the crooked shall be made straight, and the rough ways shall smooth; and all humanity shall see the salvation of God.” (Luke 3.4-6). Or perhaps you will see it. Maybe you will see it behind all the hubbub of a commercial Christmas. Maybe you will see the light. The light of the world. The light of Jesus Christ. “...in him was life, and the life was the light of all people. The light shines in the darkness, and the darkness did not overcome it.” (John 1.4-5). I leave you with the words of Frederick Buechner concerning the season of Advent. “What is coming upon the world is the Light of the World. It is Christ. That is the only comfort of it. The challenge of it is that it has not come yet. Only the hope for it has come, only the longing for it. In the meantime we are in the dark, and dark, God knows, is also in us. We watch and wait for a holiness to heal us and hallow us, to liberate us from the dark. Advent is like the hush in a theater just before the curtain rises. It is like the hazy ring around the winter moon that means the coming of snow which will turn the night to silver. Soon. But for the time being, our time, darkness is where we are.”

Enjoy your Advent!

Pastor Daniel Shaw



---

White, James. *Introduction To Christian Worship*. Nashville: Abingdon Press, 1990. p.74  
Buechner, Frederick. *The Clown in Belfry*. San Francisco: HarperCollins, 1992. p.120-122

Join us for

*Christmas*  
*at*  
*Emmanuel*



**Candlelight Christmas Eve Services**

**Friday, December 24**

**4:00 PM**

**5:30 PM**

**9:30 PM**

\*\*\*\*\*

**Saturday, December 25\* - Christmas Day**

**10:00 A.M. - Worship with Holy Communion**

*\*There will be no 5:00 PM church Service this week*



Lay School of Theology – Emmanuel Lutheran Church

Lutheran Confessional Writings: Speaking the Christian Faith



## **Dr. Mary Jane Haemig**

Luther Seminary

**January 10-13**

**1 to 3 pm, repeated at 7 to 9 pm each day.**

Luther and his followers sought to state the gospel message clearly, that is, they sought to confess Christ's benefits and their faith in ways that people could understand. We face similar challenges today. Come and study the Lutheran Confessional Writings, consider how they witness to God's action in Christ Jesus, and why they are important for us now.

**Cost of the class is \$15. No preregistration required.**

**Emmanuel Lutheran Church**

**1315 N. Stevens St.**

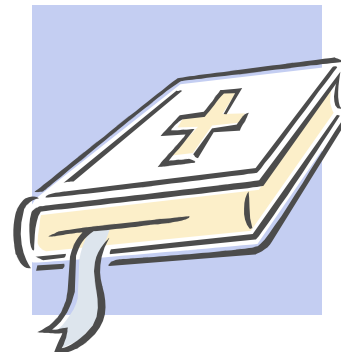
**Tacoma, WA 98406**

**253-752-3571     [www.emmanuel-tacoma.org](http://www.emmanuel-tacoma.org)**

***THROUGH THE BIBLE CONTINUES! 9:45 AM in ROOM 200***

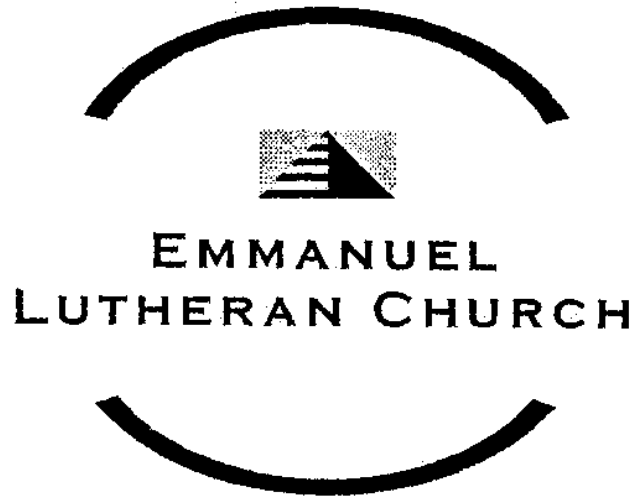
Pastor Daniel Shaw is the instructor.

Please grab one of our new pew Bibles and join us as we continue our study of the Old Testament. We will begin to Study the New Testament in January, 2011.



**Attention: Committee Chairs**  
**Annual Reports Deadline**

All Annual reports are due in the church office no later than **Thursday, January 6th.**



If at all possible please email your report, or download your information on a flash drive and drop them off in the church office by the due date.

Thank you!

**NOTE:**

You can email your reports to the following address:

[Cathy@emmanuel-Tacoma.org](mailto:Cathy@emmanuel-Tacoma.org)

# Reminder



**WE HAVE A WEBSITE!**

**CHECK US OUT AT:**

[www.emmanuel-tacoma.org](http://www.emmanuel-tacoma.org)

ECHOES newsletter is now available on the website!

**Contact Information**

Church Office.....752-3571  
 Childcare Office..... 752-1195  
 Office Fax Number.....752-6078  
 Emergency Phone Number .....468-4221

**Office Extension Numbers**

Rev. Daniel Shaw, Pastor.....Ext. 12  
 Front Desk.....Ext. 10  
 Cathy Porter, Secretary.....Ext. 11  
 Judy Bebich, Program Coordinator.....Ext. 13  
 Carmen VanSoest, Music Director..... Ext. 14  
 Wendy Hrvatin, Childcare Director.....Ext. 19  
 Laurie Moren, Youth Director.....Ext. 23  
 Theresa Fitzgerald, Sunday School Coordinator.....Ext. 26

**E-mail Addresses**

Daniel Shaw, Pastor .....dshaw@emmanuel-tacoma.org  
 Church Office.....office@emmanuel-tacoma.org  
 Secretary.....cathy@emmanuel-tacoma.org  
 Program Coordinator.....judy@emmanuel-tacoma.org  
 Sunday School.....childrensministry@emmanuel-tacoma.org  
 Youth Director.....laurie@emmanuel-tacoma.org  
 Music Director.....musicdirector@emmanuel-tacoma.org  
 Emmanuel Lutheran Childcare Center.....elcchildcare@emmanuel-tacoma.org

**Web Site Information**

Web Master.....webmaster@emmanuel-tacoma.org  
 Emmanuel's Web Site.....www.emmanuel-tacoma.org

## Moving? Or Temporarily Away?

**PLEASE!!! Save the church some money!**



***Please*** notify the church office of your ***new address*** and ***phone number*** so we can update our records. **You can do this on a worship card or call the church office at 752-3571.** This current information is greatly appreciated. It also saves the church ***a lot of money*** when we don't have to pay the returned postage. When we have to re-send mail such as offering envelopes and other bulk rated mail, we do not get the bulk mail rate again. It costs a lot of money to send at the regular rate. Please notify the church office if your address changes.

### **ATTENTION!!! DEADLINE: JANUARY 2011 ECHOES**

***Please note that all January 2011 ECHOES articles*** are due in the church office on ***Wednesday, December 15th.*** If your article is not received by that time, it will ***not*** be published in the upcoming issue. In order for members to receive the ECHOES by the first of each month, you must have all of your information in by the due date. You may put your articles on a flash drive and bring it to me in the church office or you may e-mail your articles and information by the due date to the following address [judy@emmanuel-tacoma.org](mailto:judy@emmanuel-tacoma.org). Thank you!

If you want to know the availability of a room, or have an event coming that you would like to have scheduled on the calendar, or if you have some information to put in the ECHOES newsletter or the weekly bulletins, please call the church office at 752-3571, or send e-mail to [judy@emmanuel-tacoma.org](mailto:judy@emmanuel-tacoma.org).

Dear Emmanuel congregation,

We are very grateful for the wonderful help and compassion shown by Pastor Shaw and Pastor Foege and friends here at Emmanuel during the illness and death of Frank.

God bless you all!

Barbara Robinson and family



**Ron Baker**  
**Frank Jessee**  
**Norma Lyslo**  
**Patty Shaver**

**CASCADE REGIONAL BLOOD SERVICES**  
**220 SOUTH I STREET, TACOMA WA 98405**  
**1-877-24-BLOOD**  
**WWW.CRBS.NET**

### BE A SILENT HERO!

Our next Blood Drive is on Saturday, December 4th from 9:00 - 11:30am in the Sand Memorial Center.

Thank you for helping to save lives!



The family of Winifred (Winnie) Kildahl who passed away on November 20th.

### PARISH RECORDS

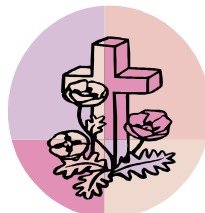
#### Child Baptism

11/14/2010 Melanie Cline



#### Funerals & Memorials

11/14/2010 Frank Robinson



## SOUP GROUP LUNCHEONS RETURN!

### COME JOIN THE SOUP GROUP LUNCH BUNCH!

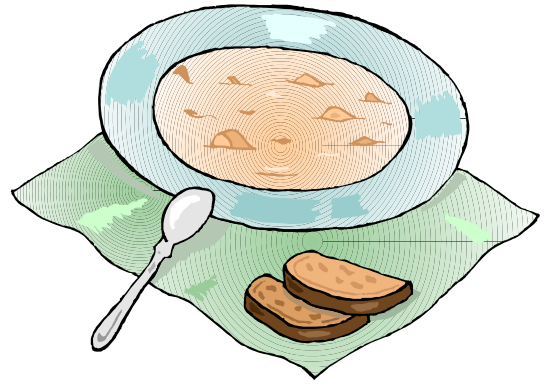
Friday, December 17th from 11:30 A.M. - 1:30 P.M. in the Sand Memorial Center for a bowl of HEARTY SOUP AND CHATTER.

Soup served till 12:30 P.M.

We welcome salads & desserts.

Open to everyone.

(Free-will offering **accepted**)



### BOXES FOR THE TROOPS PACKING PARTY

We will be packing boxes for the troops on Sunday, December 5th after the 11:00am worship service. If you could help, it would be appreciated.

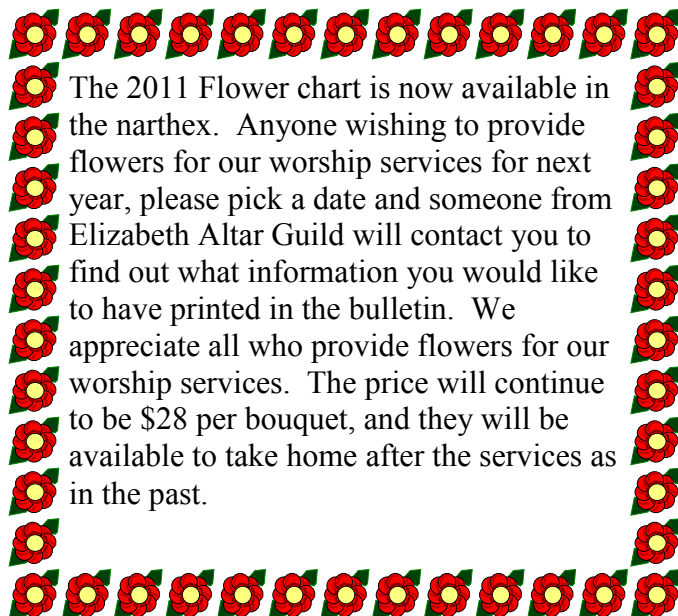
### Knit Wits

We meet in the Fireside Room Monday evenings from 7:00 – 9:00pm. If you would like to work on a portable craft, or would like to learn a portable craft, Knit Wits is for you! Instruction is always available on many types of crafts. Everyone, including youth, is welcome to join us anytime! Any questions call Sherry Loseke (253-564-9399).

### Quilting Ladies

Quilting will resume on January 4th.

If you have any questions you may call Barbara Kaup (253-460-0638).



### ELIZABETH ALTAR GUILD

The Elizabeth Altar Guild will be meeting to decorate the Sand Memorial Center and the Sanctuary for Christmas on Friday, December 3rd. There will be no regular meeting in December. The January 2011 meeting is to be announced at a later date. Watch for more information in your weekly bulletins.

Anyone interested in finding out what we do or joining us is welcome, we can always use more help. Any questions, please call Lee Hunt at 253-566-0125.





Every day in 35 countries, Lutheran World Relief works to combat the causes of poverty and the dignity it robs from people's lives. We advocate for Fair Trade that helps farming families and artisans earn a better income. We teach people to better care for themselves, their communities and the environment. We teach people how to be less vulnerable to natural disasters. We advocate with and for them for policy change that more fairly represents them. We counsel them after manmade and natural disasters, and help them recover with material aid. We do all of this exclusively with partners from the communities we serve. Our partners help us remain incredibly efficient and effective. Our partners let us help people help themselves...for a day when they won't need us at all.

Our Church supports Lutheran World Relief  
in many ways including Parish Projects –  
Making Quilts and School Kits.

As you plan for the coming year,  
think about getting more involved  
in these wonderful Parish Projects.

Quilters Meet Tuesday mornings in the Fireside Room.

Contact Barb Kaup 460-0638 to learn more about the quilts and how you can help,  
you do not have to know how to sew 😊

School Kits are done by the Support & Assistance Committee, they meet the first Monday of the month at 7:00 pm in the Fireside Room. For more information contact Joyce Farmer 752-2200

***YOU can join. YOU can help be part of the solution.***

***Thank YOU ♥***



# DECEMBER

## Ministry News 6th Grade-Adult

### Middle School Ministry

Sunday morning 9:45 a.m. room 202

### High School Ministry

Sunday morning through the Bible with  
Pastor Shaw, 9:45

It's time to sign up for "Holden May Youth Weekend", May 21-23 Cost is \$160, and yes, it includes a T-shirt. Pick up your registration form from Laurie.

### Adult Ministry

Sunday morning through the Bible with  
Pastor Shaw, 9:45 a.m. room 200

### Faith at Home Ministry

This year's Advent Devotional, *All I want for Christmas*, is a great way to share God's word with your loved ones. You can pick one up in the office if you don't have one.

### Men's Ministry

All men are invited to join us every Wednesday at 9:00 a.m., for a delicious breakfast and a study of the Gospel lesson for the coming Sunday. Meet in the Sand Memorial Center.

### 1 Peter 4:10

Each of you has been blessed with one of God's many wonderful gifts to be used in the service of others. So use your gift well.

## DECEMBER OPPORTUNITIES

### Giving Tree

Emmanuel will have a Christmas tree set up in the Fireside Room and in the narthex with the names, age and gender of children in our community who are in need this Christmas. The entire congregation is encouraged to stop by and get a name to add to your shopping list this season.



**December 12th**-You are all invited to Emmanuel's Christmas gathering in the Sand Memorial Center at 12:00 p.m. "*I am bringing you good news of great joy for all the people*" *Luke 2:10* Come celebrate the Good News with dinner, scripture readings and Christmas songs.

**December 19th**-An afternoon at the Movies. Let's all meet at "Regal 15", (2410 S 84th St, in Lakewood), to see Narnia's "*The Voyage of the Dawn Treader*". Watch for movie time to be announced in our Sunday bulletin.



## EMMANUEL LUTHERAN CHILDCARE

Happy holidays to everyone. Hope everyone enjoyed their Thanksgiving. Our children very much enjoyed our Puddle Jumping day. They brought their rain boots and coats. We stomped around the church and in the parking lot. It was a blast. Thank you to all who joined in the wet and raining fun.

The childcare Christmas program will be on Saturday December 11. We will be in the Sanctuary for the program, which starts at 11:00 am, followed by a potluck luncheon, in the Sand Memorial Center. The children have been practicing their songs, in hopes they will have a big audience. Join us if you can.

**Lifetouch Christmas Portraits December 1<sup>st</sup>.**

**Christmas Program & Luncheon December 11<sup>th</sup>.**

**Childcare Closed December 24<sup>th</sup>.**

**Childcare closed December 31<sup>st</sup>.**

We wish everyone a very Merry Christmas and a Happy New Year!

Emmanuel's childcare staff



## **EMMANUEL LUTHERAN CHURCH**

Pastor Daniel Shaw

1315 N Stevens Street, Tacoma WA 89406

(253) 752-3571 Fax (253)752-6078



**Remember...”The Boxes for the Troops” is an ongoing project.**

**Emmanuel Lutheran Church is sending food and sundry items to U.S. troops stationed in Iraq and Afghanistan.**

**Members of our armed forces receiving these packages appreciate each item. In addition to boosting morale, sundries such as toothpaste, toothbrush, shampoo and Handi-wipes help with hygiene and comfort. Food items such as granola bars, trail mix and jerky can be slipped into a pocket to have while engaged outside of the camp.**

**We want to give you the opportunity to support our troops by donating items listed on the following page. Monetary donations to help with postage and items will be greatly appreciated. Postage to send each box is about \$12.50. You may make your monetary donations in the church office. Please put your items in the plastic tote bins available in the church entry.**

**If you would like to learn more about our mission to the troops you may contact Marcia Ellingson at (253) 564-1421 or Paula Aplin at (253)752-7108.**

**We pray that you will help support our troops this way.**

## **SUGGESTED ITEMS TO BE SENT TO THE TROOPS**

### **FOODS:**

Nuts  
Blue Diamond Almonds  
Trail mix  
Salty Snacks  
Powdered drink mix  
Hot cider packets  
Coffee (singles)  
Tea Bags  
Sweetened cereals (Snack Packs)  
Flavored instant oatmeal (in packets)  
Microwave popcorn  
Cracker Jacks  
Fruit roll ups  
Dried Fruit  
Top Ramen  
Fiddle Faddle  
Cookies-Store bought  
Crackers  
Packaged soft batch cookies  
Jerky  
Hard Candies individually wrapped  
Easy Mac  
Nothing that melts (no chocolate)  
Otter pops or other things that  
can be frozen before eating.

### **PERSONAL ITEMS**

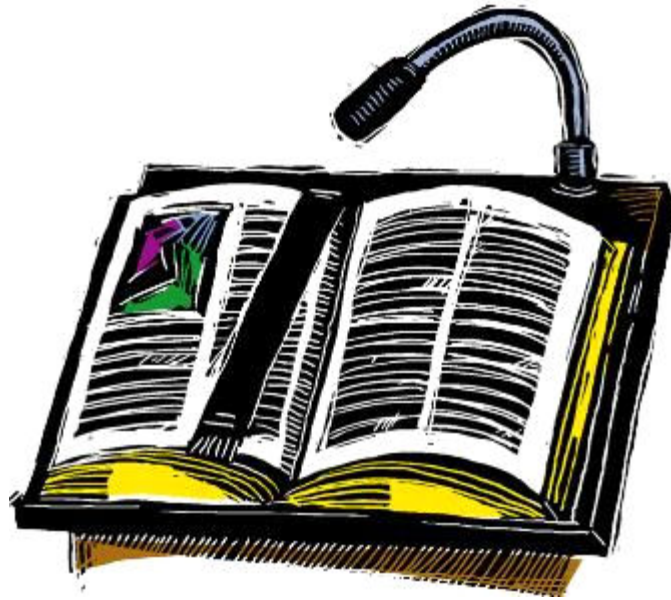
Sunscreen  
Lip balm  
Antibacterial wipes  
Hand sanitizer  
Skin lotion  
Folding toothbrushes

Toothpaste  
Dental Floss  
Throat drops  
Shampoo (small containers)  
Bug repellent wipes  
Foot cream/powder  
Razors (triple blade disposable)  
Anti-itch powder (i.e. Gold Bond)  
Nail clippers  
Moist toweletts  
Handi-wipes  
Eye drops  
Zip lock baggies  
Paperback books

### **For Iraqi Children**

Small toys  
Small balls  
Sidewalk chalk  
Stocking caps  
Children's socks  
Color books & crayons  
Soccer ball & pump  
Picture books  
Marbles  
Matchbox cars  
School supplies  
Jump ropes  
CD's or DVD'S  
AAA or AA batteries

## LAY READERS FOR DECEMBER 2010



Saturday 4th 5:00 P.M. John Clark

Saturday 18th 5:00 P.M. John Clark

Sunday 5th 8:30 A.M. Debbie Gallinatti  
11:00 A.M. Sherry Ryan

Sunday 19th 8:30 A.M. Dr. Mike Gage  
11:00 A.M. Sally Tetlow

Saturday 11th 5:00 P.M. Nancy Purdy

Saturday 25th 5:00 P.M. Connie Scusselle

Sunday 12th 8:30 A.M. Steve Scriba  
11:00 A.M. Dr. Dan Cook

Sunday 26th 8:30 A.M. Debbie Olson  
11:00 A.M. Not filled

## December 2010

Sun	Mon	Tue	Wed	Thu	Fri	Sat
			1 7:00 Childcare Portraits 9:00 Men's Breakfast 4:00 Brownies 5:15 Handbells 6:30 Adult Choir	2 6:30 Cub Scouts	3 9:30 Altar Guild Decorating for Christmas	4 8:30 Girl Scout Leadership Training 9:00 Blood Drive <b>5:00 Communion Worship</b>
5 <b>8:30 Communion Worship</b> 9:45 Education Hour <i>Thru the Bible</i> <i>Sunday School</i> <b>11:00 Communion Worship</b> 12:00 Youth Committee 2:00 NW Flute Winter Concert 6:00 Financial Peace Class	6 10:00 TOPS 5:30 NW Flute 7:00 Knit Wits 7:00 Support & Assistance 7:00 Boy Scouts	7 12:00 Toastmasters Mtg. 5:00 Children's Choir 5:30 TOPS 6:00 Resource Comm..	8 9:00 Men's Breakfast 4:00 Brownies 5:15 Handbells 6:30 Adult Choir	9 6:30 Cub Scouts	10	11 <i>Hunger Offering</i> 11:00 Childcare Christmas Program 2:30 Girl Scout Party/ Celebrating Juliet Lowe's Birthday Hunger Offering <b>5:00 Worship Service</b>
12 <i>Hunger Offering</i> <b>8:30 Worship Service</b> 9:45 Education Hour <i>Thru the Bible</i> <i>Sunday School</i> <b>11:00 Communion Worship</b> 12:00 Christmas Gathering w/Luncheon (All Congregation Event)	13 10:00 TOPS 5:30 NW Flute 7:00 Knit Wits 7:00 Boy Scouts 7:00 Girl Scout Leadership	14 12:00 Toastmasters Mtg. 5:00 Children's Choir 5:30 TOPS 6:00 Resource Comm.	15 9:00 Men's Breakfast 4:00 Brownies 5:15 Handbells 6:30 Adult Choir	16 6:30 Cub Scouts	17 11:30 Soup Group	18 <b>5:00 Communion Worship</b>
19 <b>8:30 Communion Worship</b> 9:45 Education Hour <i>Sunday School</i> <i>Thru the Bible</i> <b>11:00 Worship Service</b>	<b>ECHOES DEADLINE</b> 10:00 TOPS 6:00 Finance Committee 7:00 Knit Wits	21 12:00 Toastmasters Mtg. 5:00 Children's Choir 5:30 TOPS 6:00 Church Council	24 9:00 Men's Breakfast	25 6:30 Stewardship Committee	24 Christmas Eve Candlelight Services 4:00 PM 5:30 PM 9:30 PM  <b>Childcare Closed</b>	25 Christmas Day* <b>10:00 Worship Service w/                      Communion</b>  <i>*(no 5:00 p.m. service)</i>
26 <b>8:30 Worship Service</b> 9:45 Education Hour <i>Sunday School</i> <i>Thru the Bible</i> <b>11:00 Communion Worship</b>	27 10:00 TOPS 7:00 Knit Wits	28 12:00 Toastmasters Mtg. 5:30 TOPS 6:00 Worship & Music	29 9:00 Men's Breakfast	30	31  <b>Childcare Closed</b>	



*“Through Christ’s friendship and love  
we seek to become richer in faith”*

**EMMANUEL LUTHERAN CHURCH  
DECEMBER ECHOES 2010  
READ, LEARN AND ENJOY!**

**WORSHIP SCHEDULE**

**SATURDAYS - 5:00 P.M.-Contemporary - Sanctuary**

**SUNDAYS - 8:30 A.M. - Traditional - Sanctuary**

**9:45 A.M. - EDUCATION HOUR**

*Sunday School*

*Thru the Bible*

**11:00 A.M. - Praise & Worship - Sand Memorial Center**

~~~~~  
**CHILD CARE NURSERY**

(Infants - 3 year olds)

Available: All Sundays

(8:15 A.M. - 12:15 P.M.)

No Child Care provided on Saturday evenings